

Chevrolet Distributor

Delivering the "Good Oil" to all the right places

October 2021

Published by the ***Vintage Chevrolet Association of Queensland Inc.***
P.O. Box 20, Holland Park, Qld 4121. Website: vintagechevclubqld.org

Meetings held at 8.00 pm on the second Thursday of each month in Brisbane,
in the Veteran Car Club rooms, 1376 Old Cleveland Road, Carindale.

IN THIS ISSUE:

"Chevrolet 110th Anniversary Rally" Preview

Feature Story "1939 Holden-bodied Chevrolet utilities"



In red soil country on the "Chevrolet 110th Anniversary Rally"
September 2021

Bulletin Board

2021-2022 Office Bearers

President	Chris Mitchelson	3256 4949
Vice-President	Craig Williams	3849 5962
Secretary	Bryan Cantrell	3848 7904
Treasurer	Kevin Ward	0412 183 804
Tour Coordinators	Phil Thomas	0427 570 435
	Arthur Walz	0412 732 720
Committee	Michael Ferguson	0407 759 634
	Paul Gardiner	0405 627 171
	Arthur Walz	0412 732 720
Dating & Inspection	Ian Herse	0412 779 142
Librarian	Don Moylan	3284 1534
Website	Kevin Ward	0412 183 804
Editor	Bryan Cantrell	3848 7904

Direct deposit banking details: Heritage Bank BSB 638-070 Account No. 9051066

Upcoming General Meeting dates

Thursday 14th October 2021; Thursday 11th November 2021; Thursday 9th December 2021

Coming events

Sunday 24th October 2021 travelling to Sel Outridge Park, Peel Street, Redland Bay.
Depart clubrooms at 9.00am. BYO morning tea and picnic lunch or buy from nearby shops.
Consult the club website for information updates.

Classified advertisements – For Sale or Wanted

For sale: 1935 Chevrolet “Master” parts: cylinder head; tappet cover; manifold; water pump; clutch pressure plate (no clutch plate); gearbox. Also front suspension (“knees”) x2 reconditioned.
Contact Roy Browne on 07 3801 1939.

For sale: 1954 Chevrolet ‘210’ sedan, cream, good running order, \$25,000; also 1947 Chevrolet Fleetmaster coupe (Fisher body, RHD) mechanically restored, body painted (blue) and comes with an upholstery and trim kit. Includes all other parts necessary to complete the restoration. Price \$35,000.
Both vehicles located in Adelaide, S.A. Contact Clive Luedeke on 0407 718 933.

For sale: Luggage rack, suit 1930 Chevrolet. Sandblasted and Painted. \$150.
Contact Ray Chandler on 0475 746 446

Note: All advertisements should be sent to the Secretary by email [bjlcantrell@ozemail.com.au] or communicated by telephone on 07 3848 7904 or 0467 216 826.

President's Message

Here it is at the end of September – 3/4 of the way through the calendar year and edging closer to the end again.

As I write this we're just back from our 110th Anniversary Tour in Kingaroy and Pittsworth. It was a bit touch and go in the days leading up to the start with the likelihood of a snap lockdown throwing our plans into disarray. However, we managed to get away and apart from one quite heavy downpour the weather stayed fine and we all had a good time - I think. I hope some of those who attended will write up a story for the editor for the next edition of the "Chevrolet Distributor".

As the festive season approaches the club has decided on two functions again for Christmas, the first at the clubrooms on Saturday the 4th December and a second round at the Alderley Arms Hotel on Sunday the 19th. More details will follow on both of these events in the next edition but at least it gives you a date claimer. And for those members who live a little further away and may perhaps be thinking of visiting Brisbane in that time frame, an option to come join us for the day.

So for now that's all from me - hope to see you out in your Chevrolet.

Chris

MINUTES OF THE GENERAL MEETING OF VCAQ INC., 9TH SEPTEMBER 2021

The President, Chris Mitchelson, opened the meeting at 8.05 pm and welcomed 24 members.

Apologies: Zenia Browne; Judy Cantrell; Roger Dunstan; Edna Gallagher; Anne Hnoudis; Noel, Margot, Brendan & Jessica Kitchiner; Brian Leahy; Lesley Mitchelson; Jenny Thompson; Kevin Ward.

Minutes: The minutes of the previous meeting were circulated in the "Chevrolet Distributor" for September 2021; the Secretary moved that they be accepted as a true and accurate record; seconded by Arthur Walz. Carried.

Business Arising from Minutes: Nil.

Inwards Correspondence: Magazines – G&D, June & August 2021. Other - Nil. **Outwards Correspondence:** Reminder letters to unfinancial members. The Secretary moved the acceptance of the correspondence; seconded by Ian Herse. Carried.

Reports:

Treasurer: The President, on behalf of Kevin Ward, gave a complete report on the club finances and moved that the report be accepted; seconded by Roy Browne. Carried. .

Website: No report in Kevin Ward's absence.

Membership Secretary: Nothing to report.

Dating & Inspection: Nothing to report.

Librarian: Nothing to report in Don Moylan's absence.

Recent and coming events:

Phil Thomas advised of upcoming events: the Beenleigh Cane Parade on Saturday 16th October 2021 sponsored by Rotary and a VCAQ excursion on Sunday 24th October 2021, commencing at the clubrooms and heading for Redland Bay. He also asked for comment on the draft format for future VCAQ Sunday and/or Midweek events presented at the last meeting, including destinations North, South, East and West of Brisbane. Suggestions for additional destinations are welcome to either himself or Arthur Walz. Details of events will be added to the club website and advertised in issues of the "Chevrolet Distributor".

Christmas functions: Following discussion, it was agreed to hold a social get-together in the clubrooms on Saturday 4th December 2021, followed by a lunch in the Alderley Arms Hotel on Sunday 19th December 2021. Further details to follow in due course.

General Business

1. Club merchandise. Shirts – see Noel Kitchiner; Name Bars – see Chris Mitchelson; Car Display Boards (club name amendment stickers) – see Michael Ferguson.
2. Lockyer Valley Regional Council and Queensland Transport Museum. A recent reply has been received to VCAQ's expression of interest in providing a Chevrolet display next year in the Museum. Museum staff suggested a display in early 2022, possibly January to March. Interested members should contact either the President or Secretary for further information.
3. At a previous meeting Noel Kitchiner asked if any plans exist for a VCAQ 55th Anniversary celebration in 2024? Following discussion it was suggested that members forward their opinion and ideas for potential venues to either the President or Secretary.
4. Chris Mitchelson reminded members that the Annual General Meeting will be held as part of the next meeting (14th October).
5. Michael Ferguson advised that the VVCAA 55th Anniversary Rally will be held in Forbes NSW in September 2022, following the National Chevrolet Festival.
6. Nola Herse suggested a "Dessert Night" as part of the November meeting, in lieu of the traditional supper. Members would be asked to bring a plate. It was also suggested that members dress up for the occasion in a "D" theme e.g. a dancer, a donut or similar.

Meeting closed at 8.45 p.m.
Bryan Cantrell, Secretary

MEMBERS PLEASE NOTE: As indicated in the minutes, expressions of interest from members wishing to display a Chevrolet in the Gatton Transport Museum in 2022 should be communicated to either the President or Secretary, who may then provide further information on the conditions of display in the museum.

Similarly, ideas relating to a possible VCAQ 55th Anniversary Event in 2024 should be communicated to either the President or Secretary.

Chevrolet Chatter

Coined by the idea that Chevrolet Chatter is integral to any gathering of club members, this section of the magazine is dedicated to passing on club news and other information.

“Chevrolet 110th Anniversary Rally”

An integral part of VCAQ activities marking the 110th Anniversary of the Chevrolet Motor Company that was formed in 1911, the “Chevrolet 110th Anniversary Rally” was held from 11-17 September 2021 with two foci – the Kingaroy district in Queensland’s South Burnett Region, followed by the Pittsworth/Brookstead area on the Darling Downs. Superbly planned by Chris & Lesley Mitchelson, the rally attracted 23 VCAQ members for all or part of the time including Chris & Lesley, Jim & Carol Andrews, Bryan & Judy Cantrell, Geoff & Barbara Clegg, Roger & Bubpha Dunstan, Michael & Jodi Ferguson, Baden & Christine Pearse, Greg & Sharon Ross, Max & Jane Scholefield, Barry & Julie Veitch, Arthur Walz plus Wally & Jenny Ware.

The rally kicked off with copious “Chevrolet Chatter” at the first evening’s sausage sizzle and continued all week from venue to venue and during chance meetings during the ample free time that Chris & Lesley built into the program. Interesting things to see, enjoyable driving of one’s Chevrolet along country roads and sharing social meals made the rally one to remember.

A full rally report will be featured in the November 2021 “Chevrolet Distributor” as the final fascicle of the “Chevrolet 110th Anniversary” theme running through this year’s issues.



Above: one of the start points at Caboolture Historical Village.

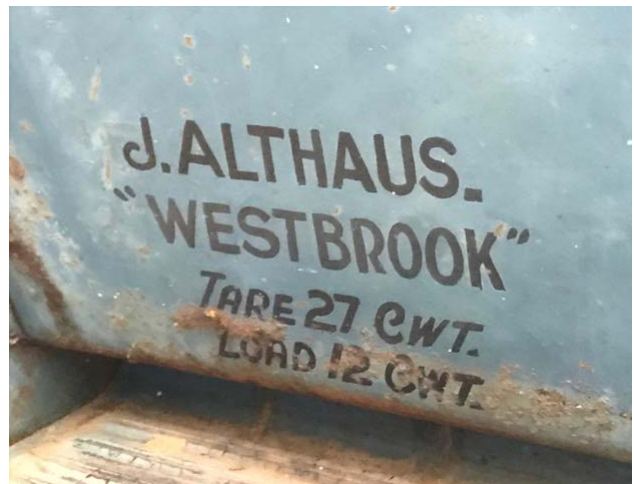
Right: the prow of Max & Jane’s 1929 sedan.



A tale of two Chevrolets – the Original



*Glen & Helen Vaughan's
original family-owned
1939 'Standard'
Open Delivery utility
Brookstead Qld*



*Photos by
Roger Dunstan*



Photographs taken during the "Chevrolet 110th Anniversary Rally" September 2021

A tale of two Chevrolets – the Restored

From this....



to this →



Bob & Gail Pridham's

*1939 'Standard'
Open Delivery' utility*

Adelaide, S.A.

*Photos provided by
Bob Pridham*

Feature Story

1939 Australian Holden-bodied utilities

S P E C I F I C A T I O N S

CHEVROLET STANDARD AND MASTER DE LUXE UTILITIES

ENGINE.—Six cylinders, overhead valve; 3½ in. bore, 3¼ in. stroke; S.A.E. or R.A.C. rating, 29.4 h.p.; develops 85 h.p. at 3,200 r.p.m.

VALVES.—Intake, 1½ in. diameter; exhaust, 1¼ in.

PISTONS.—Light-weight cast iron, with dome-head and slipper-skirt; electroplated.

CONNECTING ROD BEARINGS.—2⅞ in. diameter, 1½ in. long. Material, babbitt.

CRANKSHAFT.—Weight, 68 pounds. Counterbalanced. Rubber-floated Harmonic balancer combined with crankshaft pulley. Four bearings.

BEARINGS.—Four removable steel-backed main bearings. Four removable steel-backed camshaft bearings. Cast babbitt connecting rod bearings.

OILING SYSTEM.—Refill capacity, 8½ pints. Positive pressure feed to crankshaft, camshaft, and valve rocker arms. Connecting rod bearings lubricated by dippers at low speeds, and at higher speeds by pressure jets of oil directed against the dippers. Gear type pump in crankcase, with screen on intake side. Crankcase ventilator.

FUEL SYSTEM.—Down-draught, Carter single-adjustment balanced carburettor, with accelerating pump. AC air cleaner, silencer and flame arrester. Fuel mixture heated (thermostatic control) in manifold heat chamber. Mechanical high-reserve fuel pump with filter; 15-gallon tank under driver's seat on body models.

COOLING.—Ribbed cellular copper-core radiator. Capacity, 11½ quarts. Self-adjusting permanently lubricated, ball bearing water pump. Full-length water jackets. Nozzle-spray valve-seat cooling.

ELECTRICAL.—Delco-Remy ignition with automatic and vacuum spark-advance control; octane selector. High-output ventilated generator. Voltage regulator. 15-plate battery. 105 ampere-hours. Accessible battery cover. Mechanical-shift starter.

CLUTCH.—Improved ventilated diaphragm spring type. Single cushion-mounted disc with braided moulded facings; permanently lubricated ball throw-out bearing.

TRANSMISSION.—Synchro-mesh, silent second speed (all models). Vacuum gear-shift. (Master de Luxe models only.)

POWER PLANT MOUNTING.—Cushion-balanced.

FRAME.—Box-girder type, with flanged box-section side rails and cross members.

REAR AXLE.—Semi-floating. Hypoid drive gears. One-piece hanjo-type pressed-steel housing. One-piece differential case.

REAR SPRINGS.—Semi-elliptic with threaded shackles. Double-acting hydraulic shock absorbers. Dual deflection rate with 4-leaf auxiliary spring.

BRAKES.—Four-wheel hydraulic. 11 in. brake drums, with cast iron braking surface and cooling ribs. Mechanical hand brakes, with under-cowl trigger-release lever.

WHEELS AND TYRES.—Five short-spoke steel disc wheels. Spare wheel.

TYRES.—6.00-16.

INSTRUMENT PANEL.—Indirectly lighted. Includes battery charge indicator, oil-pressure gauge, speedometer, illuminated theft-resisting ignition lock, lighting switch, choke and throttle controls, petrol gauge, headlamp-beam

indicator, and glove compartment with flush lock. Cigar Lighter and Engine Heat Indicator. Covered openings for installation of radio controls and clock.

EQUIPMENT.—High-pressure gun lubrication, tool kit, tail and stop, light, rear vision mirror, vibrator horn, two-beam headlamps with parking bulbs. No-Draught ventilation. Front bumper. Vacuum windscreen wiper on Panel Van. Electric windscreen wiper and adjustable sun visor on full door Coupe models. Rubber pads on clutch and brake pedals.

TRIM.—Coupe Utilities: M.B. leather on seat and squab. Panel Van: Fabrex on seat and squab.

WHEELBASE.—112½ inches.

WINDSCREEN.—V-type windscreen of "Armourplate" safety glass.

ON STANDARD MODELS ONLY.

FRONT SUSPENSION.—I-beam front axle. Semi-elliptic springs; reversed front eyes double-wrapped. Double-acting hydraulic shock absorbers front and rear. Front ride stabilizer.

STEERING GEAR.—Shockless semi-reversible worm and roller, 19 to 1 ratio.

ON MASTER DE LUXE ONLY.

FRONT SUSPENSION.—Independent Front Wheel Suspension, with built-in double-acting hydraulic shock absorbers. Front ride stabilizer.

STEERING GEAR.—Semi-reversible, worm and ball-bearing roller-sector; 17½ to 1 ratio. Shock-proof steering.

EQUIPMENT.—Stainless steel running board mouldings.

Specifications and Equipment Subject to Change Without Notice.

G.M.A.C. CONFIDENTIAL PAYMENT PLAN.

When you acquire your Chevrolet under the G.M.A.C. Confidential Payment Plan you enter into business relations, not with an outside finance organisation, but with a Company which is a unit of General Motors, and thus has a direct interest in maintaining your satisfaction in your Utility. Because General Motors Acceptance Corporation is the largest Hire Purchase Institution in the world, it is able to offer low rental charges, and to arrange a payment plan fitted to your individual requirements. Your local dealer can explain the G.M.A.C. Plan to you and arrange your payments to suit you.

PROTECTIVE OWNER SERVICE POLICY.

For 90 days or 3,000 miles of operation, you are protected against defective workmanship or material under the terms of General Motors-Holden's Ltd. unusual Owner Service Policy. In addition to this, you are entitled to two thorough inspections and adjustments of your Chevrolet without any charge whatsoever. Genuine Chevrolet Spare Parts and Expert Service are available throughout Australia.

Your Money Goes Farther in a General Motors' Product

GENERAL MOTORS HOLDEN'S LIMITED

BRISBANE
SYDNEY
MELBOURNE
ADELAIDE
PERTH

K. W. 26.2.39 PRINTED IN AUSTRALIA

This year, earlier issues of the "Chevrolet Distributor" featured 1938 Chevrolet Holden-bodied commercial vehicles, particularly the Panel Van which, as readers will remember, were produced in early and late versions having significantly different bodies - but similar mechanically.

Moving on a year and, by coincidence, stories of two 1939 Chevrolet Holden-bodied 'Standard' utilities became available to fill this feature article. One is an original family-owned ute with a beautiful patina; the other a nicely restored and repainted example. Both have charm in their own way.

One lives in Queensland, owned by VCAQ members Glen & Helen Vaughan; the other lives in South Australia, owned by VVCAA (SA) members Bob & Gail Pridham. Photographs of both grace the centrefold pages in this issue.

Unlike 1938 Chevrolet utes which were available in either 'half-door' or 'full-door' configurations, in 1939 only 'full-door' bodies were produced. However, the dual oval-sided rear windows were retained from 1938 rather than incorporating the more rectangular dual rear window set-up from Holden-bodied sedans and coupes ("slopers") of that year.

Brief histories of these two vehicles.

Glen writes "The Chev was purchased new by my maternal grandparents Jacob and Katharine Althaus in Toowoomba in 1939. They lived on a dairy farm at Westbrook, just west of Toowoomba. The speedo is showing approx. 80,000 original miles. The utility is in original condition having been stored in our shed until recently. It runs and drives well having new tyres fitted and brakes attended to. We sourced some external and internal door fittings which were broken and intend to basically leave it in original condition with some other minor repairs."

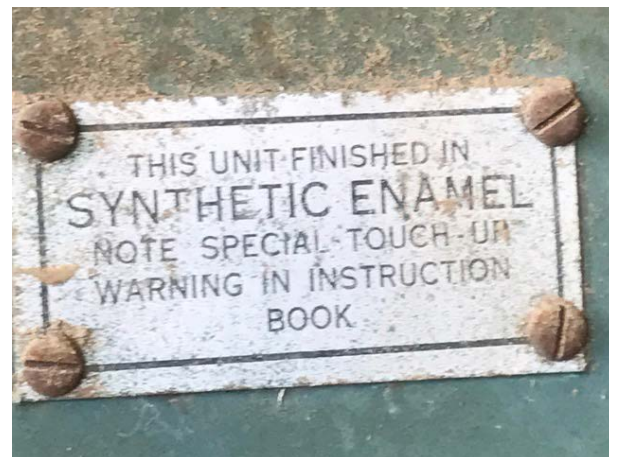
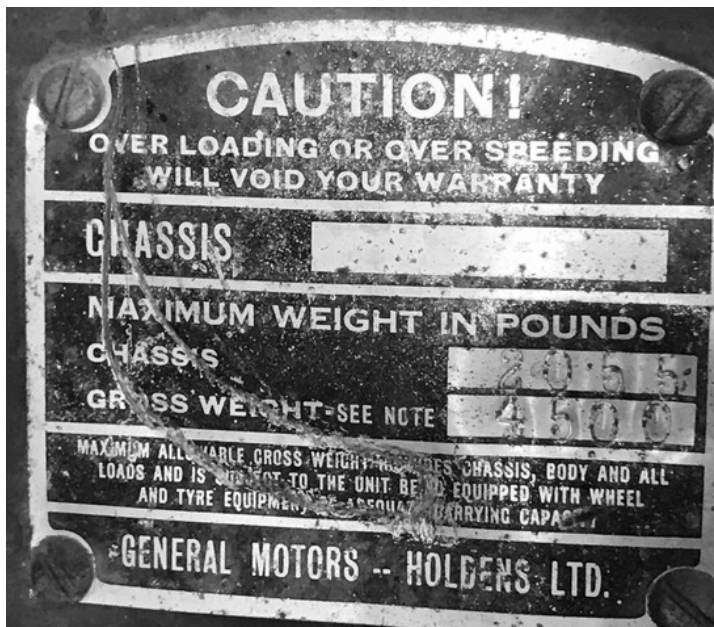
Bob writes "I purchased the ute in 2004 from a Mr Jones over by Adelaide Airport. It was stored at his father's property; he had passed away and the house was to be sold. The Chev was advertised for \$2500; I got him down to \$2200, complete with a spare reconditioned motor, diff & gearbox (1948). Apparently his plan had been to convert to column shift. Since the original motor in the ute ran smoothly with no rattles, I just replaced the oil seals."

A farmer from Jamestown was the owner that drove the ute. There were a lot of dents on the left side and rusted panels at the rear. The tailgate skin was ok, I replaced the wooden frame with steel. The Sunvisor was from America on Ebay, the style was the same as used on the FJ Holdens. The Chev was back on the road in 2015. I retired in 2011 but with house renovations did not start the restoration until 2013."

Body data plates

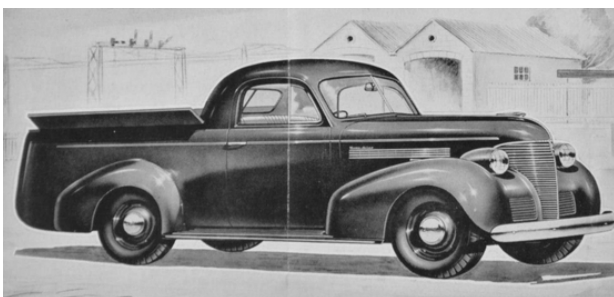


We are fortunate that Norm Darwin, in his book "The history of Holden since 1917" includes a listing of paint abbreviation codes for General Motors vehicles produced by Holdens in the 1930s. Using that, the colour code of Glen's Chevrolet 'NRVA' may be translated as Narva Green, a Bergers product in synthetic enamel. The original colour code of Bob's Chevrolet 'CLGTA' is a Dulux product named Coolangatta Cream. Note that these data were rather roughly hand-stamped on the aluminium plates. The respective date codes G9 and J9 equate to July and October 1939, validating the higher Body No. on Bob's Chevrolet. Records indicate a total of 2139 Chevrolet 'Standard' utes made in 1939.



Two more data tags on Glen's Chevrolet: the load capacity plate and paint information plate.

The available models



In addition to the 'Open Delivery', buyers could choose either the 'Flareboard Delivery' (shown left), the 'Wellside Delivery' or the Panel Van (both shown below).

Illustrations taken from the sales brochure.

Judging by the utes still surviving, The 'Open Delivery' seems to have greatly outsold the other variations.

The 'Wellside Delivery' with the timber extensions to the load area was promoted as the vehicle for tradesmen who needed to carry longer loads such as plumbers or electricians.

This style is also reminiscent of the Chev utes cut down from 1920s tourers or roadsters which typically were of 'Wellside' design.



Just a little more

Before concluding this story it is well to reflect on two 1939 Chevrolet utes owned by VCAQ members. The first of these was driven by early member Arthur Walker and is shown in the B&W picture below., taken in the Brisbane bayside suburb of Sandgate in 1971. The ute wore its original Queensland registration plate Q306-888 and had been repainted, with a pale green body and white top.

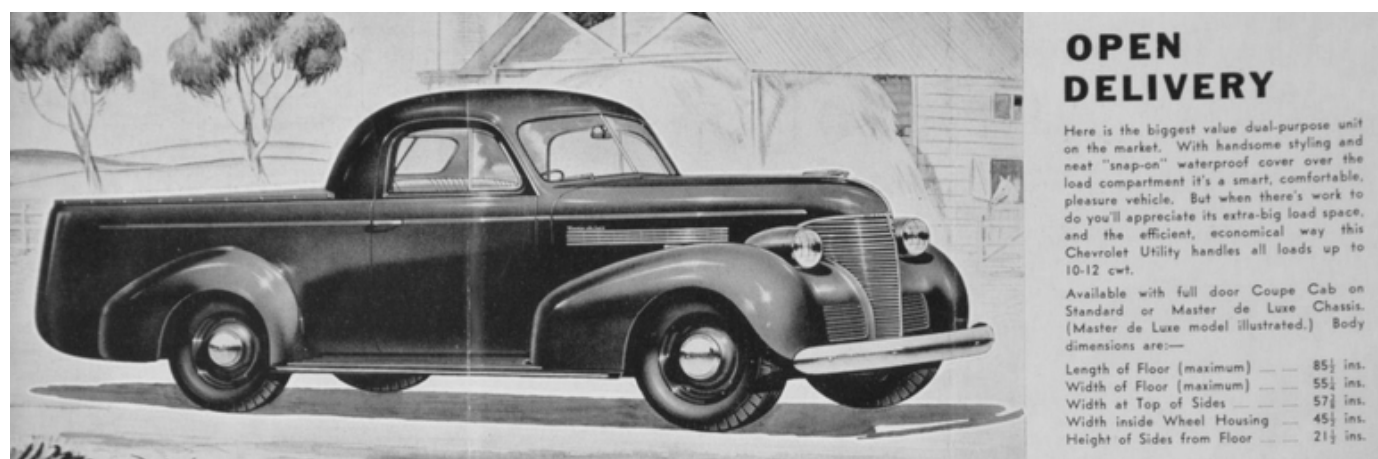


The second ute is the 1939 “Coolangatta Cream” Chevrolet previously owned by Greg & Sharon Ross, pictured in a VCAQ display during an ‘Open Day’ on Brisbane’s Story Bridge.



The final touch to this story fills the ‘Tail Light Page’ showing the Australian sales brochure cover and an artist’s illustration of an ‘Open Delivery’ utility from that brochure. Look carefully at the illustrations and you will note that they depict rectangular rear windows similar to the sedans and coupes in 1939, an idea not carried through to production.

Tail Light Page



Top: The cover of a brochure for the Australian-built 1939 Chevrolet Utility. Published by General Motors-Holdens, dated February 1939.

Lower: A line drawing of the 'Open Delivery'- one of the commercial Chevrolet styles in the brochure. Others were the 'Flareboard Delivery', 'Wellside Delivery' and the Panel Van.

Captioned as the biggest value dual-purpose unit on the market; with handsome styling and a neat "snap-on" waterproof cover over the load compartment, it's a smart, comfortable, pleasure vehicle. But when there's work to do, you'll appreciate its extra-big load space.